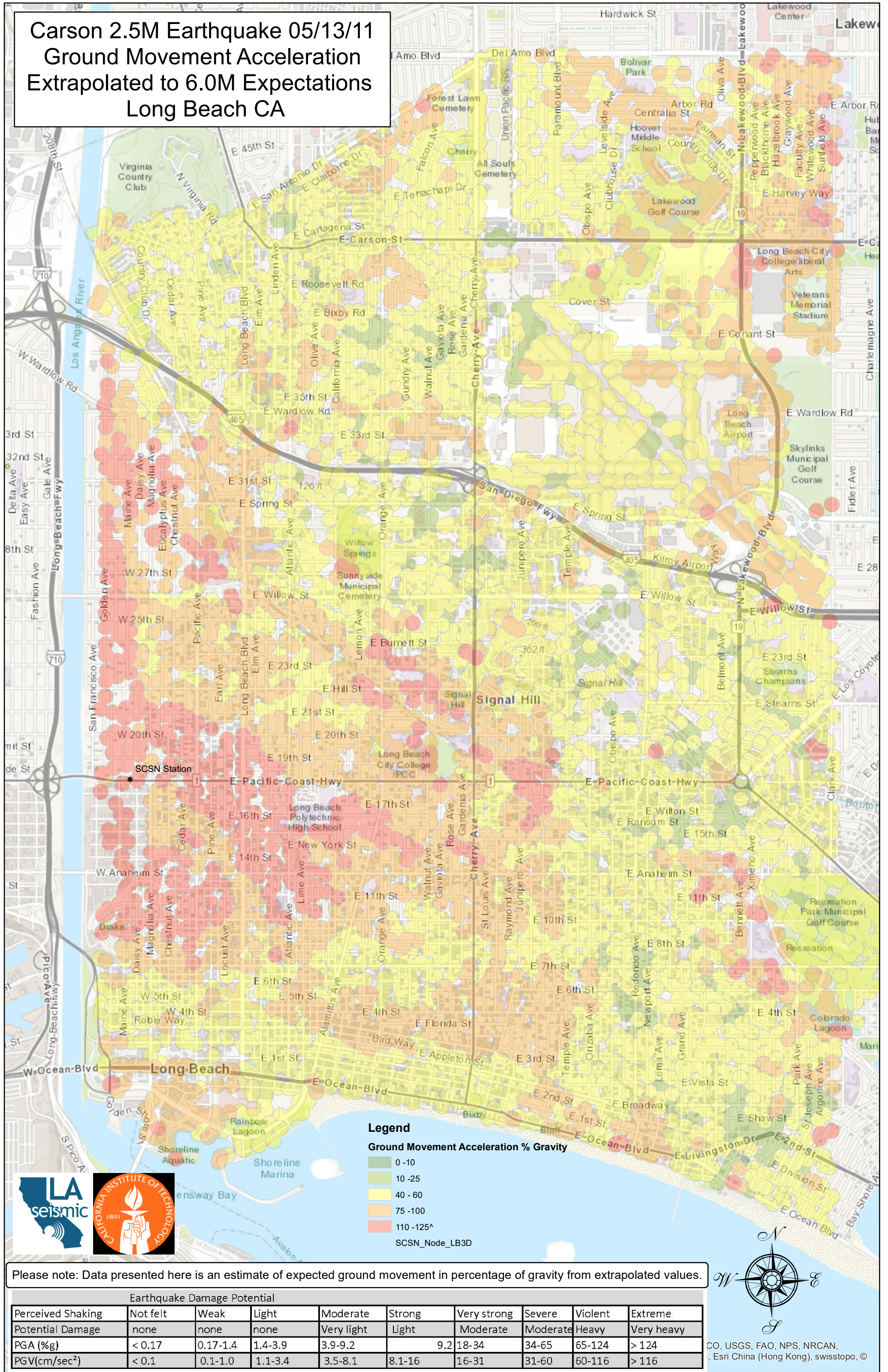


Carson 2.5M Earthquake 05/13/11  
Ground Movement Acceleration  
Extrapolated to 6.0M Expectations  
Long Beach CA



Please note: Data presented here is an estimate of expected ground movement in percentage of gravity from extrapolated values.

| Earthquake Damage Potential |          |          |         |            |        |             |          |         |            |
|-----------------------------|----------|----------|---------|------------|--------|-------------|----------|---------|------------|
| Perceived Shaking           | Not felt | Weak     | Light   | Moderate   | Strong | Very strong | Severe   | Violent | Extreme    |
| Potential Damage            | none     | none     | none    | Very light | Light  | Moderate    | Moderate | Heavy   | Very heavy |
| PGA (%g)                    | < 0.17   | 0.17-1.4 | 1.4-3.9 | 3.9-9.2    | 9.2    | 18-34       | 34-65    | 65-124  | > 124      |
| PGV(cm/sec <sup>2</sup> )   | < 0.1    | 0.1-1.0  | 1.1-3.4 | 3.5-8.1    | 8.1-16 | 16-31       | 31-60    | 60-116  | > 116      |

CO, USGS, FAO, NPS, NRCAN,  
Esri China (Hong Kong), swisstopo, ©